

ARTHUR KRUPP



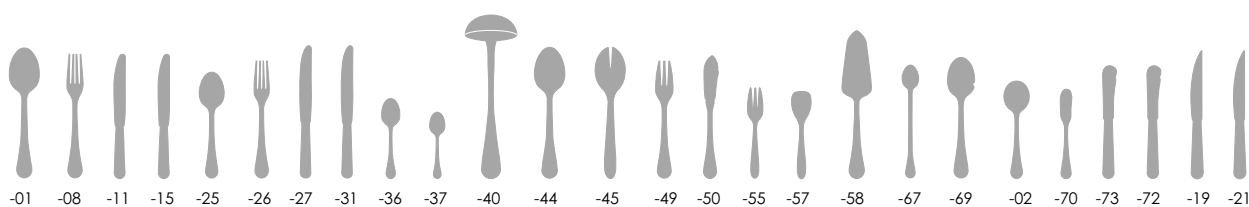
CONTOUR

62611

18/10 stainless steel
Acciaio inossidabile 18/10
Edelstahl, rostfrei 18-10
Acier Inoxydable 18-10

62811

EPSS - electroplated 18/10
stainless steel
Acciaio inossidabile 18/10
argentato
Edelstahl, rostfrei 18-10,
versilbert
Acier Inoxydable 18-10
argenté





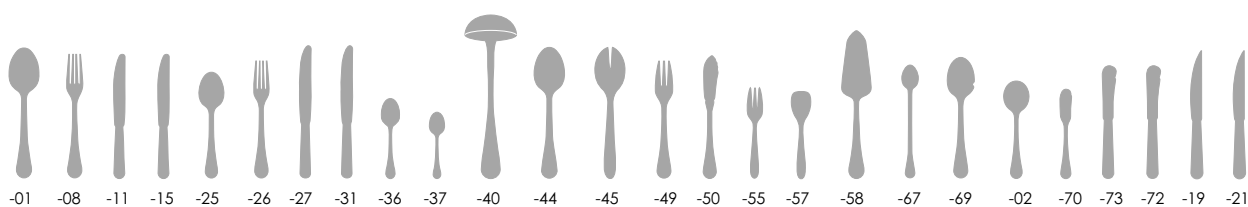
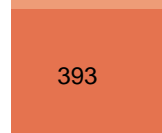
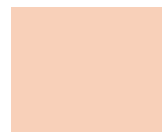
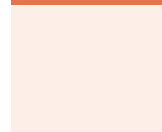
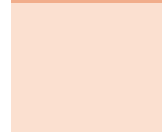
BAGUETTE

62612

18/10 stainless steel
Acciaio inossidabile 18/10
Edelstahl, rostfrei 18-10
Acier Inoxydable 18-10

62812

EPSS - electroplated 18/10
stainless steel
Acciaio inossidabile 18/10
argentato
Edelstahl, rostfrei 18-10,
versilbert
Acier Inoxydable 18-10
argenté



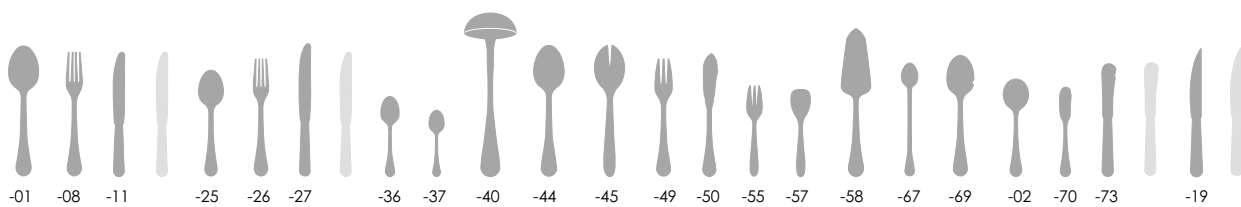
MONIKA

62613

18/10 stainless steel
Acciaio inossidabile 18/10
Edelstahl, rostfrei 18-10
Acier Inoxydable 18-10

62813

EPSS - electroplated 18/10
stainless steel
Acciaio inossidabile 18/10
argentato
Edelstahl, rostfrei 18-10,
versilbert
Acier Inoxydable 18-10
argenté





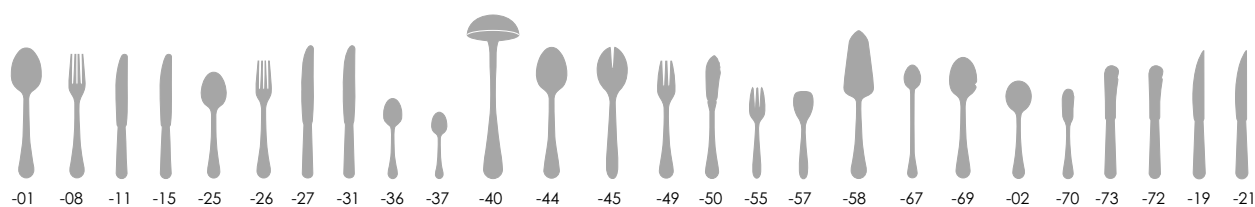
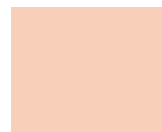
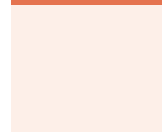
ARCADIA

62614

18/10 stainless steel
Acciaio inossidabile 18/10
Edelstahl, rostfrei 18-10
Acier Inoxydable 18-10

62814

EPSS - electroplated 18/10
stainless steel
Acciaio inossidabile 18/10
argentato
Edelstahl, rostfrei 18-10,
versilbert
Acier Inoxydable 18-10
argenté



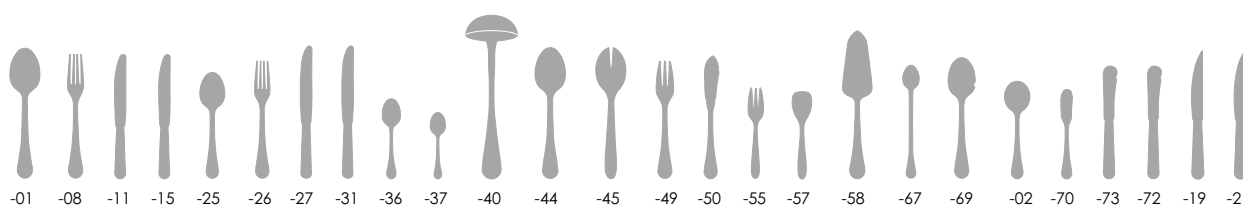
LONDON

62615

18/10 stainless steel
Acciaio inossidabile 18/10
Edelstahl, rostfrei 18-10
Acier Inoxydable 18-10

62815

EPSS - electroplated 18/10
stainless steel
Acciaio inossidabile 18/10
argentato
Edelstahl, rostfrei 18-10,
versilbert
Acier Inoxydable 18-10
argenté





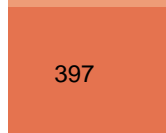
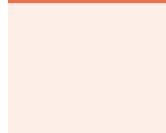
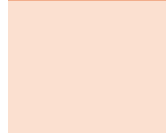
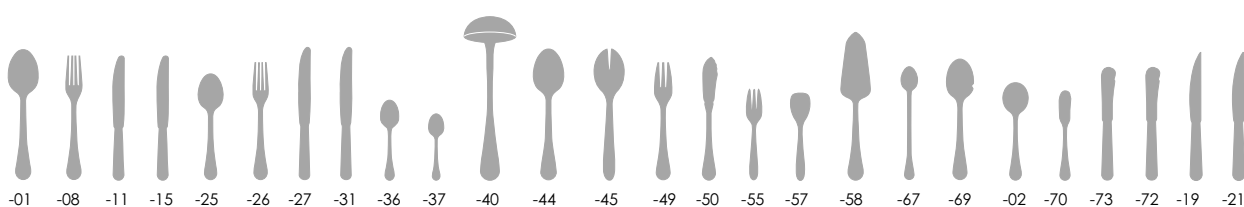
ATHENA

62616

18/10 stainless steel
Acciaio inossidabile 18/10
Edelstahl, rostfrei 18-10
Acier Inoxydable 18-10

62816

EPSS - electroplated 18/10
stainless steel
Acciaio inossidabile 18/10
argentato
Edelstahl, rostfrei 18-10,
versilbert
Acier Inoxydable 18-10
argente



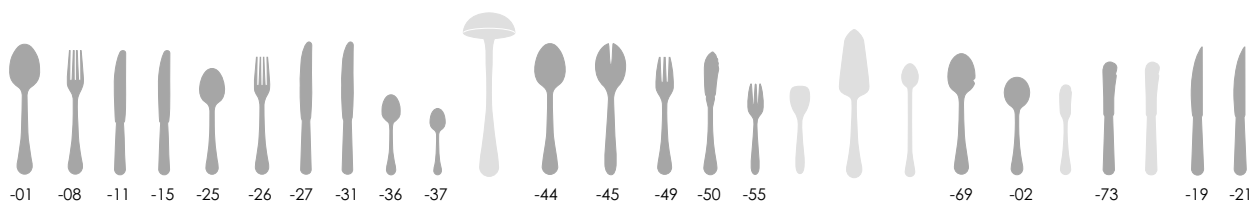
VERSAILLES

62618

18/10 stainless steel
Acciaio inossidabile 18/10
Edelstahl, rostfrei 18-10
Acier Inoxydable 18-10

62818

EPSS - electroplated 18/10
stainless steel
Acciaio inossidabile 18/10
argentato
Edelstahl, rostfrei 18-10,
versilbert
Acier Inoxydable 18-10
argenté





TECKNO

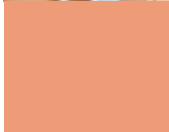
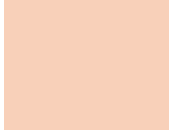
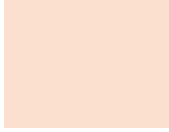
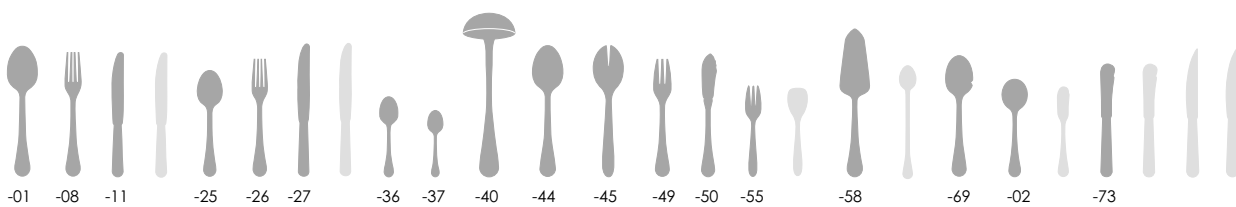
62680

18/10 stainless steel

Acciaio inossidabile 18/10

Edelstahl, rostfrei 18-10

Acier Inoxydable 18-10





	INOX 18-10								EPSS							
	Contour	Baguette	Monika	Arcadia	London	Athens	Versailles	Teckno	Contour	Baguette	Monika	Arcadia	London	Athens	Versailles	
	62611	62612	62613	62614	62615	62616	62618	62680	62811	62812	62813	62814	62815	62816	62818	
-01 <i>Table spoon</i> - Cucchiaino tavola	◇	◇	◇	◇	◇	◇	◇	◇	◇	◇	◇	◇	◇	◇	◇	
-08 <i>Table fork</i> - Forchetta tavola	◇	◇	◇	◇	◇	◇	◇	◇	◇	◇	◇	◇	◇	◇	◇	
-11 <i>Table knife, s.h.</i> - Coltello tavola, monoblocco	◇	◇	◇	◇	◇	◇	◇	◇	◇	◇	◇	◇	◇	◇	◇	
-15 <i>Table knife, h.h.</i> - Coltello tavola, manico cavo	◇	◇	◇	◇	◇	◇	◇	◇	◇	◇	◇	◇	◇	◇	◇	
-25 <i>Dessert spoon</i> - Cucchiaino frutta	◇	◇	◇	◇	◇	◇	◇	◇	◇	◇	◇	◇	◇	◇	◇	
-26 <i>Dessert fork</i> - Forchetta frutta	◇	◇	◇	◇	◇	◇	◇	◇	◇	◇	◇	◇	◇	◇	◇	
-27 <i>Dessert knife, s.h.</i> - Coltello frutta, monoblocco	◇	◇	◇	◇	◇	◇	◇	◇	◇	◇	◇	◇	◇	◇	◇	
-31 <i>Dessert knife, h.h.</i> - Coltello frutta, manico cavo	◇	◇	◇	◇	◇	◇	◇	◇	◇	◇	◇	◇	◇	◇	◇	
-36 <i>Tea/coffee spoon</i> - Cucchiaino thè	◇	◇	◇	◇	◇	◇	◇	◇	◇	◇	◇	◇	◇	◇	◇	
-37 <i>Moka spoon</i> - Cucchiaino moka	◇	◇	◇	◇	◇	◇	◇	◇	◇	◇	◇	◇	◇	◇	◇	
-40* <i>Soup ladle</i> - Mestolo	◇	◇	◇	◇	◇	◇	◇	◇	◇	◇	◇	◇	◇	◇	◇	
-44* <i>Serving spoon</i> - Cucchiaino legumi	◇	◇	◇	◇	◇	◇	◇	◇	◇	◇	◇	◇	◇	◇	◇	
-45* <i>Serving fork</i> - Forchetta legumi	◇	◇	◇	◇	◇	◇	◇	◇	◇	◇	◇	◇	◇	◇	◇	
-49 <i>Fish fork</i> - Forchetta pesce	◇	◇	◇	◇	◇	◇	◇	◇	◇	◇	◇	◇	◇	◇	◇	
-50 <i>Fish knife</i> - Coltello pesce	◇	◇	◇	◇	◇	◇	◇	◇	◇	◇	◇	◇	◇	◇	◇	
-55 <i>Cake fork</i> - Forchetta dolce	◇	◇	◇	◇	◇	◇	◇	◇	◇	◇	◇	◇	◇	◇	◇	
-57 <i>Ice cream spoon</i> - Paletta gelato	◇	◇	◇	◇	◇	◇	◇	◇	◇	◇	◇	◇	◇	◇	◇	
-58* <i>Cake server</i> - Pala torta	◇	◇	◇	◇	◇	◇	◇	◇	◇	◇	◇	◇	◇	◇	◇	
-67 <i>Ice tea spoon</i> - Cucchiaino bibita	◇	◇	◇	◇	◇	◇	◇	◇	◇	◇	◇	◇	◇	◇	◇	
-69 <i>French sauce spoon</i> - Cucchiaino Nouvelle Cuisine	◇	◇	◇	◇	◇	◇	◇	◇	◇	◇	◇	◇	◇	◇	◇	
-02 <i>Bouillon spoon</i> - Cucchiaino brodo	◇	◇	◇	◇	◇	◇	◇	◇	◇	◇	◇	◇	◇	◇	◇	
-70 <i>Butter spreader</i> - Spatola burro	◇	◇	◇	◇	◇	◇	◇	◇	◇	◇	◇	◇	◇	◇	◇	
-73 <i>Butter knife, s.h.</i> - Coltello burro, monoblocco	◇	◇	◇	◇	◇	◇	◇	◇	◇	◇	◇	◇	◇	◇	◇	
-72 <i>Butter knife, h.h.</i> - Coltello burro, manico cavo	◇	◇	◇	◇	◇	◇	◇	◇	◇	◇	◇	◇	◇	◇	◇	
-19 <i>Steak knife, s.h.</i> - Coltello bistecca, monoblocco	◇	◇	◇	◇	◇	◇	◇	◇	◇	◇	◇	◇	◇	◇	◇	
-21 <i>Steak knife, h.h.</i> - Coltello bistecca, m. cavo	◇	◇	◇	◇	◇	◇	◇	◇	◇	◇	◇	◇	◇	◇	◇	

Confezione: 12 pezzi - Unit pack: 1 dozen
(*) Confezione singola - Single packing



We reserve the right to alter at any time the specifications stated without notice.
Considering that different operations are processed manually, some slight differences between same products of different lots may be noticed.
The shape of flatware illustrated are representatives and are not to be considered as real shape.



Le misure espresse sono indicative e soggette a variazioni senza preavviso.
In considerazione del fatto che la produzione è artigianale, potrebbero rilevarsi lievi differenze tra partite diverse dello stesso prodotto.
Le sagome delle posate illustrate sono puramente indicative e non si riferiscono alle sagome reali.